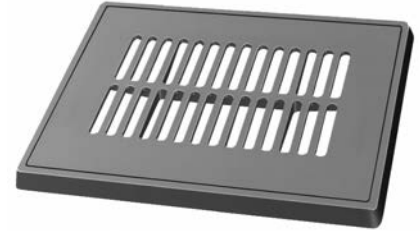
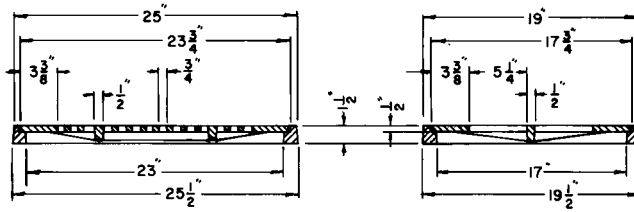


■ Note: When specifying/ordering grates, refer to "Choosing the Proper Inlet Grate" on pages 125-126.  
 For a complete listing of FREE OPEN AREAS and WEIR PERIMETERS of all NEENAH grates, refer to pages 327-332.

**R-4938**  
**Transit Frame, Grate**

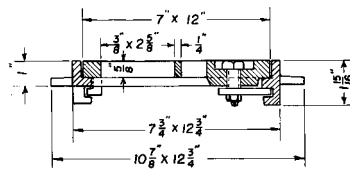
Light Duty



| CATALOG NUMBER | GRATE TYPE | SQ. FT. OPEN | WEIR PERIMETER LINEAL FEET |
|----------------|------------|--------------|----------------------------|
| R-4938         | A          | 0.8          | 6.9                        |

**R-4938-B**  
**Gutter Drain Frame, Grate**

Light Duty



| CATALOG NUMBER | GRATE TYPE | SQ. FT. OPEN | WEIR PERIMETER LINEAL FEET |
|----------------|------------|--------------|----------------------------|
| R-4938-B       | A          | 0.2          | 3.2                        |

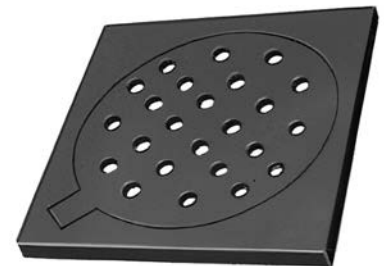
Note pavement anchors. Grate is secured in frame with countersunk pentagonal-head-bolt-operated locking device.

**R-4939 Series**  
**Hinged Drain Frame, Grate**

Light Duty

Suitable for use in basements or garages.

| Catalog No. | Size Outside | Dimensions in inches |               | Grate Thickness |
|-------------|--------------|----------------------|---------------|-----------------|
|             |              | Grate diameter       | Clear Opening |                 |
| R-4939-B    | 9 x 9        | 7                    | 6 1/2         | 1/2             |
| R-4939-C    | 13 x 13      | 10 1/2               | 10            | 1/2             |



Supplied By:



877-903-7246

www.trenchdrainsupply.com